

# Map of Montérégie bike paths

## Legend

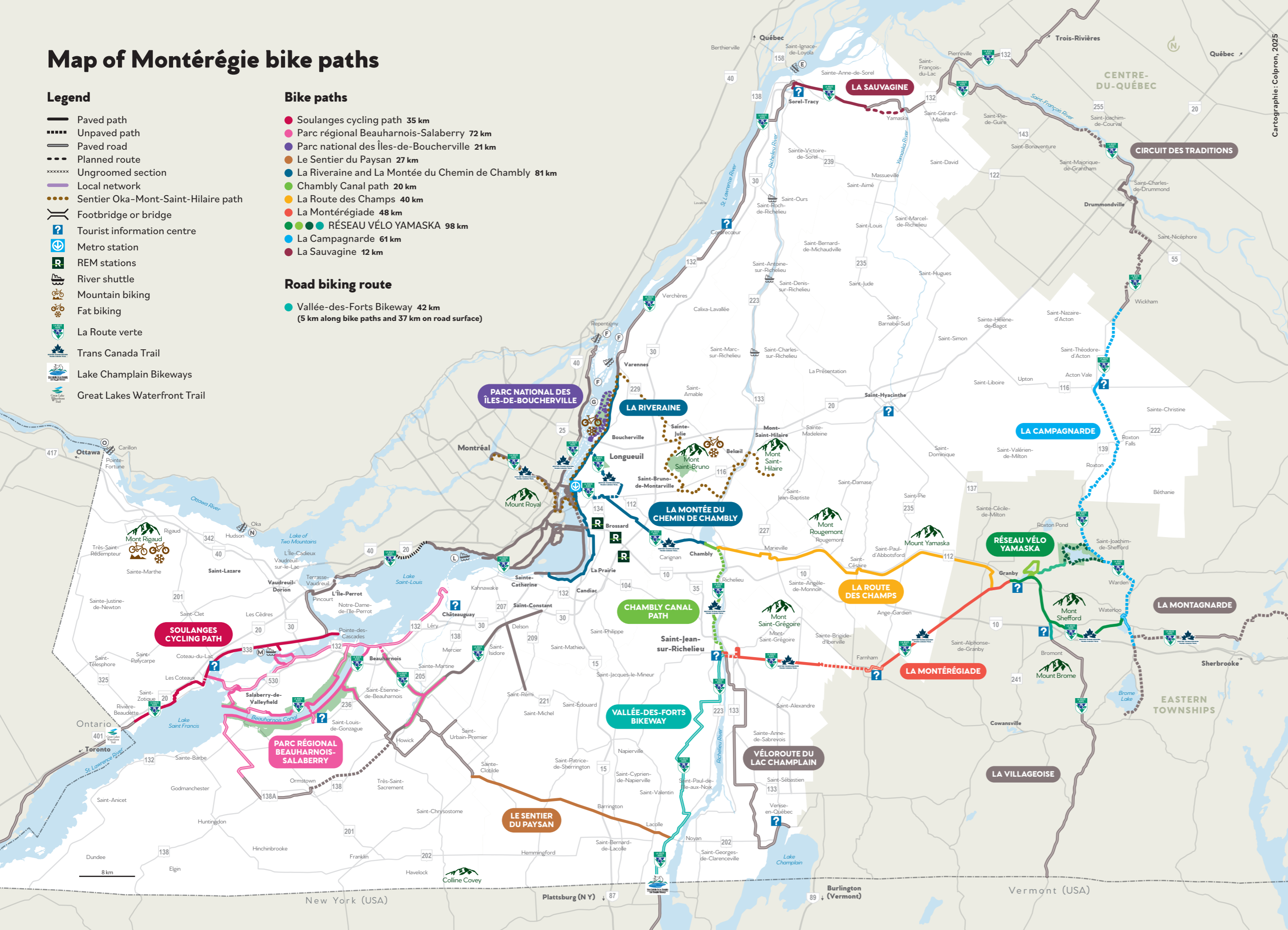
- Paved path
- Unpaved path
- Paved road
- Planned route
- Ungroomed section
- Local network
- Sentier Oka-Mont-Saint-Hilaire path
- Footbridge or bridge
- Tourist information centre
- Metro station
- REM stations
- River shuttle
- Mountain biking
- Fat biking
- La Route verte
- Trans Canada Trail
- Lake Champlain Bikeways
- Great Lakes Waterfront Trail

## Bike paths

- Soulanges cycling path 35 km
- Parc régional Beauharnois-Salaberry 72 km
- Parc national des îles-de-Boucherville 21 km
- Le Sentier du Paysan 27 km
- La Riveraïne and La Montée du Chemin de Chambly 81 km
- Chambly Canal path 20 km
- La Route des Champs 40 km
- La Montérégiade 48 km
- RÉSEAU VÉLO YAMASKA 98 km
- La Campagnarde 61 km
- La Sauvagine 12 km

## Road biking route

- Vallée-des-Forts Bikeway 42 km  
(5 km along bike paths and 37 km on road surface)



# Between two shores

## Getting to Montérégie from Montréal, and much more!

For Montrealers, the Montérégie region has the potential to be a massive backyard with endless options for exploration. The region is accessible via bridge and ferry from the city, but also by metro or the REM. Once off the island, cyclists have access to a world of possibilities through a network of interconnected trails. Check the river shuttle and ferry schedules before travelling.

## Bridges

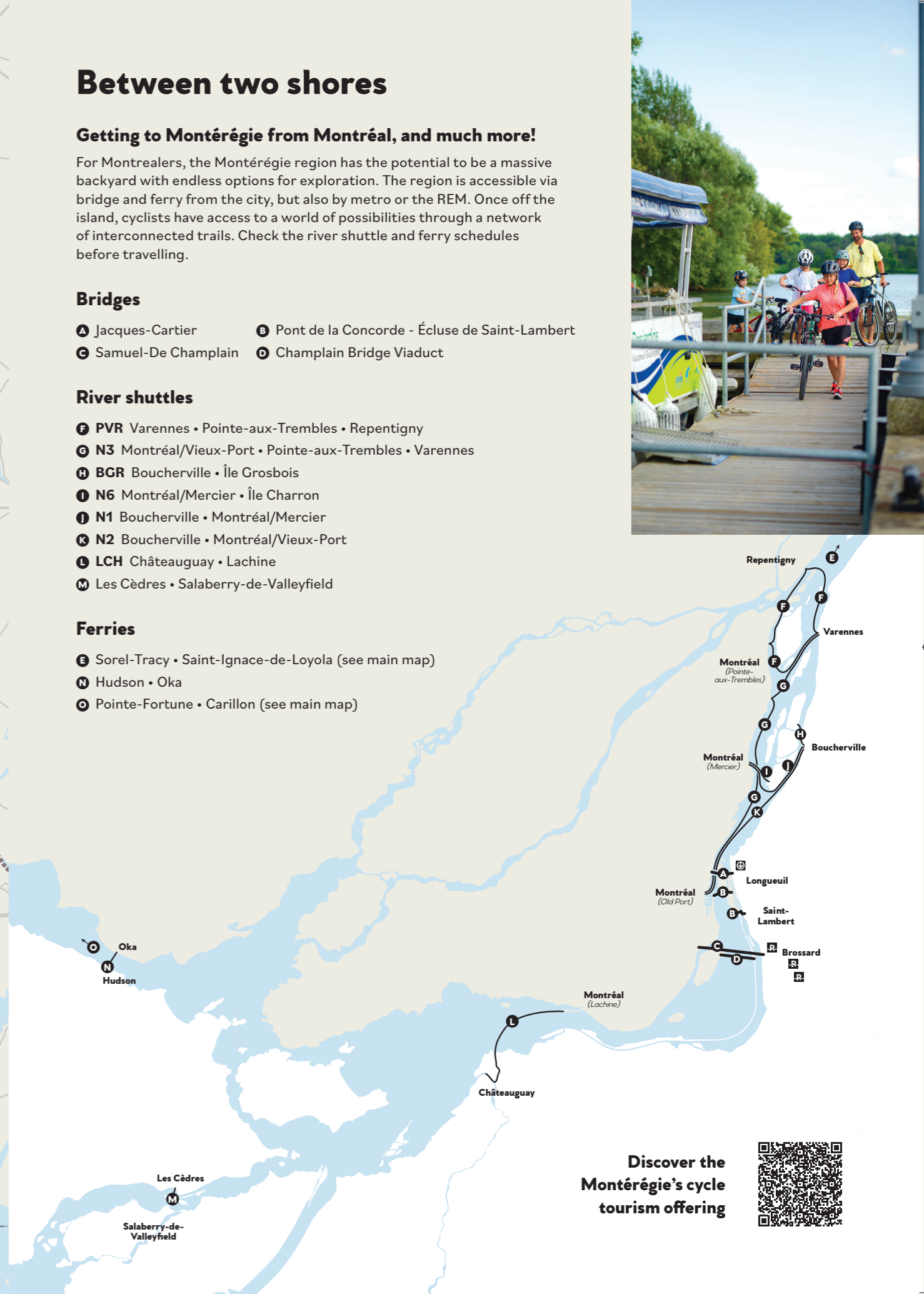
- Jacques-Cartier
- Pont de la Concorde - Écluse de Saint-Lambert
- Samuel-De Champlain
- Champlain Bridge Viaduct

## River shuttles

- PVR Varennes • Pointe-aux-Trembles • Repentigny
- N3 Montréal/Vieux-Port • Pointe-aux-Trembles • Varennes
- BGR Boucherville • Île Grosbois
- N6 Montréal/Mercier • Île Charron
- N1 Boucherville • Montréal/Mercier
- N2 Boucherville • Montréal/Vieux-Port
- LCH Châteauguay • Lachine
- Les Cèdres • Salaberry-de-Valleyfield

## Ferries

- Sorel-Tracy • Saint-Ignace-de-Loyola (see main map)
- Hudson • Oka
- Pointe-Fortune • Carillon (see main map)



Discover the Montérégie's cycle tourism offering

